



Leander Road, Brixton, SW2

4 bedroom house for sale

£1,200,000

Freehold

Property Details

Keating Estates are proud to present to market this unique and characterful four double-bedroom Victorian family home with a South-West facing private manicured garden. Nestled peacefully within the Josephine Avenue conservation area on one of Brixton's most sought-after residential streets, Leander Road, offering a village-esq, neighbourly feel. Spanning nearly 1800 square feet of internal space this beautiful property will appeal to many purchasers and early registration of interest is advised. This lovely home is a fantastic mix of period features combined with modern fixtures and high-quality finishes throughout creating a bright and appealing atmosphere from the moment you enter. The entire house was redecorated internally last year and the exterior was repointed in 2021. The property is only a short walk away from two of Brixton's most popular primary schools, the local amenities of vibrant Brixton Hill, the ever-popular Brockwell Park and the fantastic variety of nightlife on offer in central Brixton. With access to the Victoria line at Brixton tube station also within a ten-minute stroll, the location cannot be overstated. All the amenities in Herne Hill are accessible within a fifteen-minute stroll through the park

Features

- Four double bedrooms
- Two bathrooms
- Victorian freehold house
- Stunning master bedroom with unique mezzanine floor
- Nearly 1800 square feet
- Beautifully finished with a mix of contemporary design and characterful features
- Eat-in kitchen diner with bay window
- South-West facing private garden
- A short stroll to Brockwell Park, Brixton and Herne Hill stations
- Solar panels and a tanked cellar

Council tax band F EPC rating C (75)



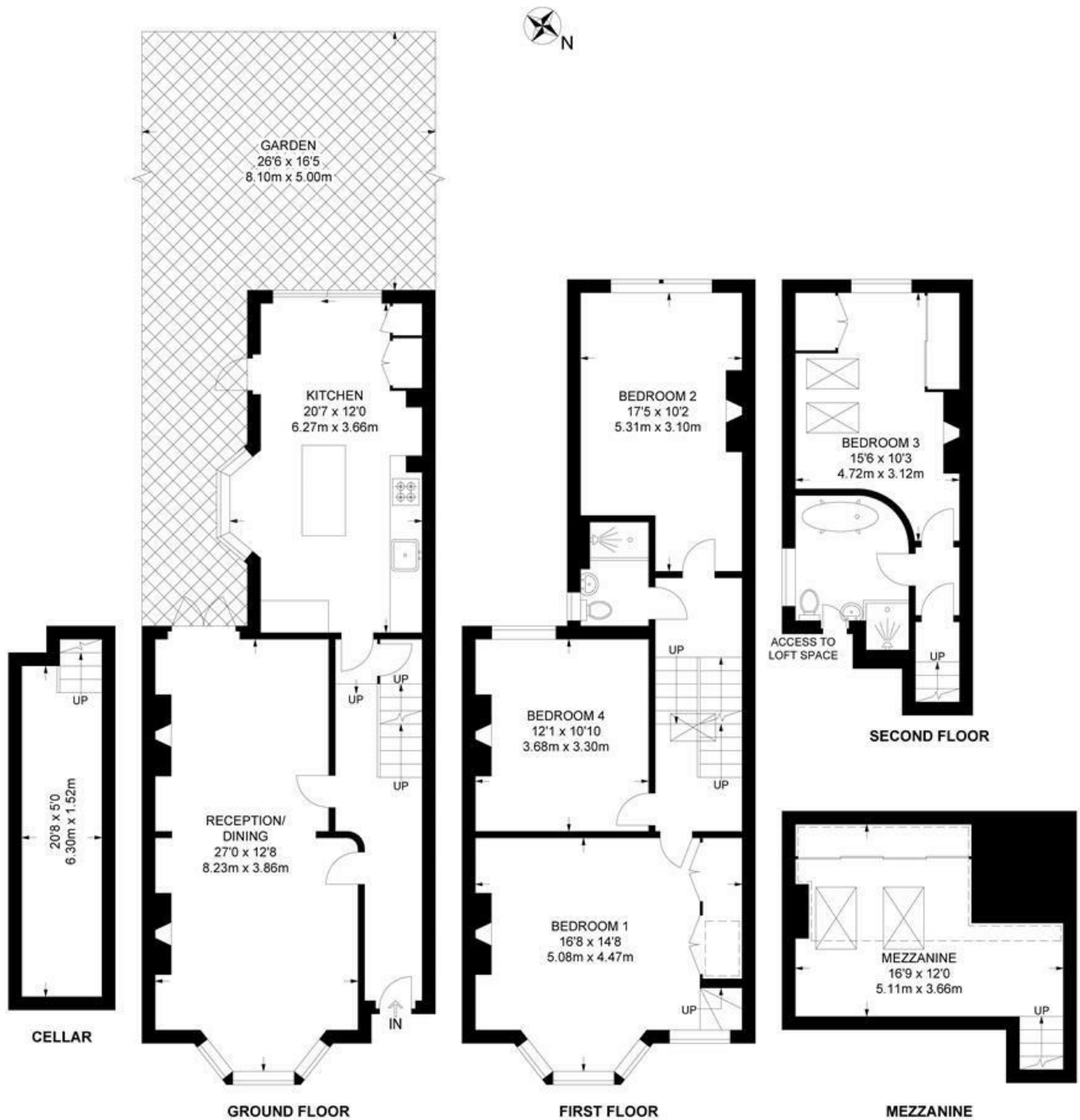


Leander Road, Brixton, SW2

Leander Road, SW2

4 Bedroom House

APPROXIMATE GROSS INTERNAL AREA WITH CELLAR : 1790 SQ FT / 166.3 SQ M



While we try our very best, floor plans are produced as a guide only and we take no responsibility for the precise accuracy with which any property is represented.

Leander Road, Brixton, SW2

